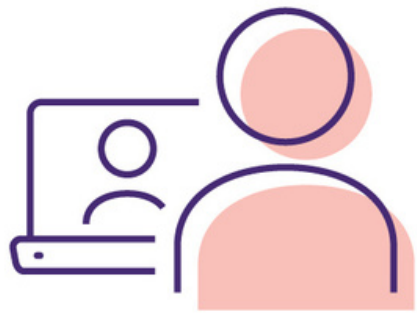


April is Kindness Month



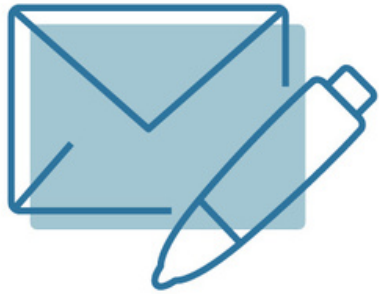
One half-hour of me listening to you complain

.....

Terms and conditions: Half-hour need not be rigidly timed and includes, but is not limited to, sympathetic responses and not offering advice unless asked. Listening will be judgment-free and entirely biased in your favor.

Brought to you by the PAN Foundation | panfoundation.org

April is Kindness Month



One letter

explaining how much you mean to me

.....

Terms and conditions: Stationery will not be smaller than one standard letter sheet with no more than $\frac{1}{4}$ taken up by artwork. Letter will be thorough, but grammar, vocabulary, and eloquence are not guaranteed. Legibility may vary.

Brought to you by the PAN Foundation | panfoundation.org

April is Kindness Month



One “Special Delivery” of delicious treats

Terms and conditions: Treats selected may include but are not limited to: candy, flowers, cookies, pie. Treats will be chosen based on what you like, not what I like. Calories may be incurred.

Brought to you by the PAN Foundation | panfoundation.org

April is Kindness Month



One grocery run

Terms and conditions: I promise to take your list with me and return with everything on it subject to grocery store stock. Non-list items such as treats or other goodies may also appear. Shopper is not responsible for items you forgot to put on the list.

Brought to you by the PAN Foundation | panfoundation.org

April is Kindness Month



One

Terms and conditions:

Brought to you by the PAN Foundation | panfoundation.org